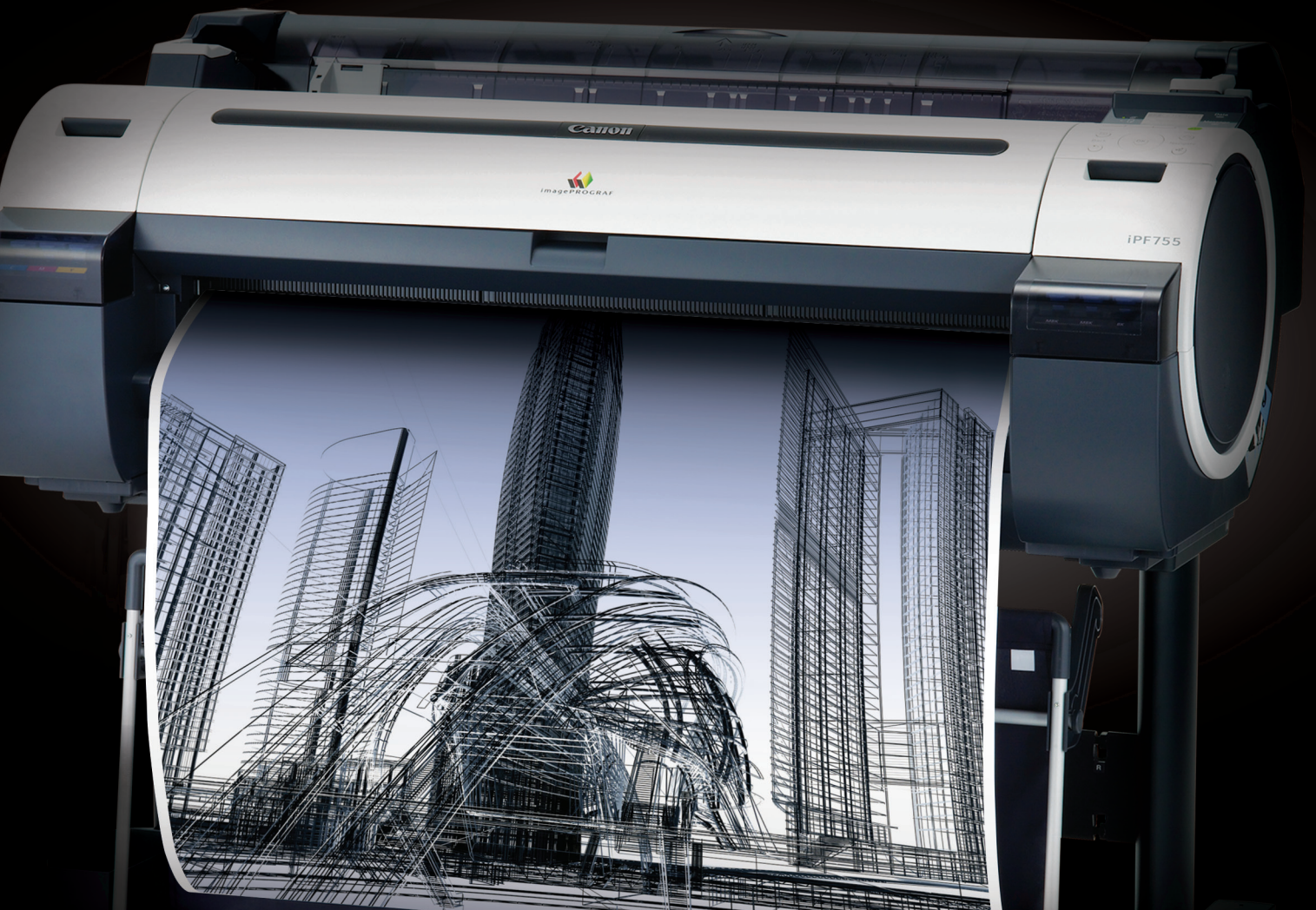


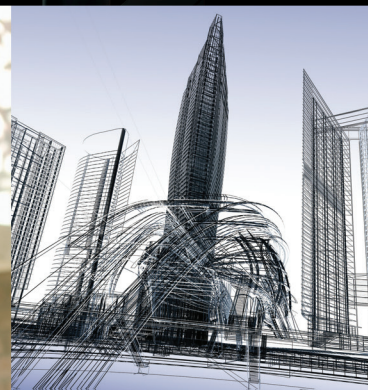
Canon

imagePROGRAF

 imagePROGRAF®
iPF755/750/655/650



**TECHNICAL
DOCUMENTS**
LARGE-FORMAT PRINTING





Introducing the 36" iPF755/750 and 24" iPF655/650 large-format printers.

The newest additions to Canon's world-renowned line of imagePROGRAF large-format printing solutions.

Specially designed for technical documents applications and general office printing, the iPF755/750 and iPF655/650 printers enable users to produce a diverse range of output. Whether the job is a complex technical document or a spectacular, full-color poster, you can get it done faster and easier than ever before. These printers work harder, so you can work smarter.

NEW FEATURES

- **Space-saving design** with fully front-accessible operation for flush wall installation
- Outstanding **ease-of-operation**, from loading paper to navigating through a newly designed control panel
- New **accounting functions** collect printer job log information and calculate printing costs
- **Sub ink tank system** allows for changing ink without interrupting a print job
- Standard support for **Gigabit Ethernet** and Hi-Speed USB allow for fast transfers of large data volumes
- **Environmentally conscious** design made with less plastic, reduced CO2 emissions, and lower overall power consumption than previous models

imagePROGRAF

ADVANTAGES

Advanced, built-in features were specifically developed for these imagePROGRAF printers to produce high-speed, high-quality output with incredible ease.

HIGH-QUALITY PRINTING

A super-high-density print-head ejects tiny 4pl droplets of ink that consistently produce **2400 x 1200 dpi output with fine lines within +/-0.10%** accuracy and as thin as 0.02mm. And Canon's unique 5-color Reactive Ink set delivers durable, smudge-resistant prints with sharp lines and text, bold colors, and smooth fills.

MAXIMUM PRODUCTIVITY

Productivity is critical when you need to keep projects moving forward to meet tight deadlines. **Now you can print a D/A1 document in approximately 28 seconds*** with Canon's advanced system architecture and one-inch print-head with 15,360 nozzles, engineered for high-volume printing. And with a built-in 80GB hard drive on the iPF755/655 printers, you can send large sets of files from multiple workstations, without locking up your computer and experiencing heavy downtime.

LOW COST OF OPERATION

A number of important built-in features help minimize ink consumption, media waste, and maintenance costs to **significantly reduce total cost** of operation. The variety of features that contribute to the cost-savings includes the Economy Print Mode for lower cost per print, auto-rotation and nesting to minimize media waste, and Canon's

proprietary durable print-heads, which reduce maintenance costs. Canon has also earned **ENERGY STAR® qualification** for the imagePROGRAF printers. They draw only 140 watts of power during use to keep the total cost of operation to a minimum.

VERSATILITY

Whether you need **direct printing support for HP-GL/2 and HP RTL files**, an HDI driver for AutoCAD®, or just an easy-to-use Windows® or Macintosh® printer driver for nesting full-color posters, Canon has what you need to simplify, strengthen, and complete your workflow. And for poster creation made simple, PosterArtist Lite and **Microsoft® Office Plug-in** give you all the tools you'll need to design and output impressive large-format signs and banners.

Fast and user-friendly, the iPF755/750 and iPF655/650 printers make it easier than ever to produce a wide range of large-format documents—from the most intricate technical drawings to presentation renderings, posters, and signs.

With three lines of imagePROGRAF large-format printers...whatever your needs, Canon has the answer.

*When printing in fast mode on plain paper. Includes paper-cutting time.



imagePROGRAF

SPECIFICATIONS



Print-Head
PF-04

Technology
FINE (Full-Photolithography Inkjet Nozzle Engineering)

Print Resolution (Max.)
2400 × 1200 dpi

Line Accuracy*
±0.1% or Less

Minimum Line Weight**
0.02mm

Number of Nozzles
Matte Black: 5,120 Nozzles
Other Colors: 2,560 Nozzles per Color

Droplet Size
4 Picoliter

Nozzle Pitch (Head Resolution)
1200 dpi × Two Rows

Print-Head Width
1.07 inch (27mm)

Ink Type
Dye
Cyan (C), Magenta (M), Yellow (Y), Black (K)

Pigment
Matte Black (MBK)

Ink Tank
PFI-102: MBK, C, Y, K
PFI-104: M

Ink Tank Capacity
Starter: 90ml
Replacement: 130ml

Ink Supply Method
Tubing System with Sub-Tanks for Continuous Ink Supply

Nozzle Recovery System
Non-firing Nozzle Detection and Compensation

Printer Controller
LCOA Controller

Printer Memory
256MB

Hard Drive (iPF755/iPF655 only)
80GB (SATA)

Mail Boxes (User Job Storage) (iPF755/iPF655 only)
1 Common Inbox, 29 User Inboxes (Password-protected)

Media Feed
Roll Feed
One Roll, Top-loading, Front Output

Cut Sheet
One Sheet, Top-loading, Front Output

Media Width
Roll Feed
iPF755/iPF750: 10" – 36" (254mm – 914mm)
iPF655/iPF650: 10" – 24" (254mm – 610mm)

Cut Sheet
iPF755/iPF750: 8" – 36" (203.2mm – 914mm)
iPF655/iPF650: 8" – 24" (203.2mm – 610mm)

Printable Margins
Roll Feed
All Sides: 0.12" (3mm) or 0" for Borderless

Cut Sheet
Leading, Sides (Left and Right): 0.12" (3mm)
Trailing: 0.91" (23mm)

Maximum Print Length (Single Page)*
Roll Feed
59' (18m)

Cut Sheet
63" (1.6m)

Borderless Printing Widths (Roll Media Only)
10" (254mm), B4, A3, 14" (356mm), A2, 17" (432mm), B2, A1, 24" (610mm)
iPF755/iPF750 only: B1, A0, 36" (914mm)

Media Cutter
Durable Dual-blade Rotary Cutter

Media Thickness
0.07 – 0.8mm (2.8 – 31.4mil)

Media Core Sizes
2" and 3" Core (Adapter Included)

Maximum Roll Outer Diameter
5.9" (150mm)

Output Media Bin
Stackable Media Basket (Standard)

Output Media Bin Capacity
20 Sheets (With Stackable Configuration)

Printing Software
imagePROGRAF Printer Driver for Windows/Mac, HDI Driver^{††}, Printer Driver Extra Kit for Windows/Mac (Free Layout, Color imageRUNNER[®] Enlargement Copy, Advanced Preview), Print Plug-in for Microsoft Word/Excel/PowerPoint for Windows, Digital Photo Front-Access for Windows, PosterArtist Lite for Windows

Operating System^{†††}
Windows 32-bit 2000/XP/ Server 2003/ Windows Vista[®]/Server 2008, Windows 64-bit XP/ Server 2003/Windows Vista/Server 2008 (Available in download only), Macintosh OS X CUPS (10.4.9, 10.5.x) 32-bit, Macintosh OS X CUPS (10.5.x) 64-bit (Available in download only)

Print Language
GARO, HP-GL/2, HP RTL

Interface
USB 2.0 Hi-Speed, 10/100/1000Base-T/TX

Protocol
TCP/IP (IPv4/IPv6), IPX/SPX, AppleTalk[®], SNMP (Canon MIB supported), HTTP

Acoustic Noise
Operation
iPF755/iPF750: 50dB (A) or Less
iPF655/iPF650: 47dB (A) or Less

Standby
35dB (A) or Less

Acoustic Power
iPF755/iPF750: Approx. 6.6 Bels
iPF655/iPF650: Approx. 6.4 Bels

Power Supply
AC 100–240V (50-60Hz)

Power Consumption
Maximum
140W or Less

Standby
5W or Less

Power Off
1W or Less (Executive Order Compliant)

Certifications
Electrical Safety Regulations
UL[®] (USA), C-UL (Canada), S mark (Argentina), CE mark (EN60950, EN55022 classB, EN61000-3-2, EN61000-3-3, EN55024) (EU), CB certification (Others)

Electromagnetic Interface Regulations
FCC Class B (USA), IC Class B (Canada)

Environmental Certifications
ENERGY STAR[®] (Worldwide), RoHS Directive, WEEE, Executive Order (USA)

Operational Environment
Temperature
59 – 86 F° (15 – 30 C°)

Relative Humidity
10 – 80% (No Condensation)

Printer Dimensions (H × W × D) and Weight with Stand and Basket
iPF755/iPF750: 41.8" × 51.3" × 34.3"
(1,062mm × 1,304mm × 870mm)
Approx. 139 lb. (63kg)
iPF655/iPF650: 41.8" × 39.3" × 34.3"
(1,062mm × 997mm × 870mm)
Approx. 119 lb. (54kg)

Package Dimensions (H × W × D) and Weight*
Printer Main Package
iPF755/iPF750: 30.3" × 56.5" × 32.7"
(770mm × 1,434mm × 830mm)
Approx. 166 lb. (75kg)
iPF655/iPF650: 30.0" × 44.4" × 32.7"
(762mm × 1,127mm × 830mm)
Approx. 139 lb. (63kg)

Stand Package
iPF755/iPF750: 9.4" × 55.1" × 30.7"
(1,585mm × 1,263mm × 2,348mm)
Approx. 38 lb. (17kg)
iPF655/iPF650: 10.4" × 43.8" × 32.1"
(263mm × 1,113mm × 816mm)
Approx. 36 lb. (16kg)

Options
PosterArtist
iPF755/iPF750: Roll Holder Set (RH2-33)
iPF655/iPF650: Roll Holder Set (RH2-26)

User-Replaceable Items
Ink Tank (PFI-102 MBK, C, Y, K; PFI-104 M)
Print-Head (PF-04)
Maintenance Cartridge (MC -10)

- * Line accuracy repeatability is guaranteed after a user performs necessary adjustment and under the same environmental conditions. Applies to media for line drawing (Plain Paper, Coated Paper, CAD Translucent Matte Film, and CAD Tracing Paper) only.
- ** Theoretical value based on data resolution.
- † The maximum printable length varies, depending on the application, OS, and RIP used.
- †† For AutoCAD or AutoCAD LT 2000/2000i/2002/2004/2005/2006/2007/2008/2009
- ††† For imagePROGRAF Printer Driver. For printing from PostScript[®] applications such as Adobe Illustrator[®] or QuarkXPress[™], please use a PostScript compatible RIP package. For a list of Canon recommended RIP packages, please consult with Canon Alliance and Industry Market program list of RIP vendors at www.usa.canon.com.
- The printer will be shipped on a pallet with stand box strapped on top of the main unit. Shipping dimensions and weight for iPF755/iPF750 are (H×W×D): 39.7" (1008mm) × 56.5" (1435mm) × 32.7" (831mm), 205lb. (93Kg). For iPF655/iPF650 they are: 40.4" (1026mm) × 44.4" (1128mm) X 32.7" (831mm).

Canon
image*ANYWARE*

www.cla.canon.com

Canon Latin America, Inc.
703 Waterford Way
Suite 400
Miami, FL 33126

As an ENERGY STAR[®] Partner, Canon U.S.A., Inc. has determined that these products meet the ENERGY STAR guidelines for energy efficiency. ENERGY STAR and the ENERGY STAR mark are registered U.S. marks. PostScript and Illustrator are registered trademarks of Adobe Systems Incorporated in the United States and/or other countries. AutoCAD is a trademark of Autodesk, Inc. in the United States. Macintosh and AppleTalk are registered trademarks of Apple Inc. Microsoft, Windows, and Windows Vista are registered trademarks of Microsoft Corporation in the United States and/or other countries. UL is a registered trademark of Underwriters Laboratories Inc. QuarkXPress is a trademark of Quark, Inc. and all applicable affiliated companies, Reg. U.S. Pat. and Tm. Off. and in many other countries. CANON, IMAGEPROGRAF, IMAGERUNNER, and the GENUINE logo are registered trademarks of Canon Inc. in the United States and may also be registered trademarks or trademarks in other countries. IMAGEANYWARE is a trademark of Canon. All referenced product names and other marks are trademarks of their respective owners. Specifications and availability subject to change without notice. ©2009 Canon Latin America, Inc. All rights reserved.

0135W384

